

Types VIZ-12 and VIZ-12G Indoor voltage transformers

Product features

- 25 kV indoor
- 125 kV BIL, 60 Hertz
- Primary volts: 7200 - 27600

Application

The VIZ-12 and VIZ-12G indoor voltage transformers are designed for service in metalclad switchgear and are used for metering, relaying, or control power. Both units are available in single, double, and tapped secondary designs with two accuracy and thermal rating options.

Construction features

The primary and secondary coils are wound using special winding and shielding techniques for improved voltage stress distribution. The coils are designed to withstand continuous operation at either 1.1 or 1.25 times the line-to-line voltage level for Z burden units and the line-to-ground voltage level for Y burden units. For some line-to-ground voltage units, a short-time withstand voltage of 1.9 is available upon request.

Each coil is insulated with mylar film to provide a high dielectric strength between layers. The coils and core are combined to create a complete winding structure that is assembled to a support frame. The entire assembly is vacuum cast in polyurethane for added insulation and protection.

Fuse classifications

These units are available in three fuse classifications: mounted fuse with hardware, unfused with hardware, or unfused without hardware. Optional fuse kits are offered to convert unfused styles to fused styles.

Consult your ABB sales representative concerning overvoltage conditions for designs above the standard rated voltage factor of 1.25.



Baseplate

The baseplate is constructed of corrosion-resistant aluminum and is secured to the encapsulated base support.

Mounting

The VIZ-12 and VIZ-12G can be mounted in upright or cantilever positions.

Test reports

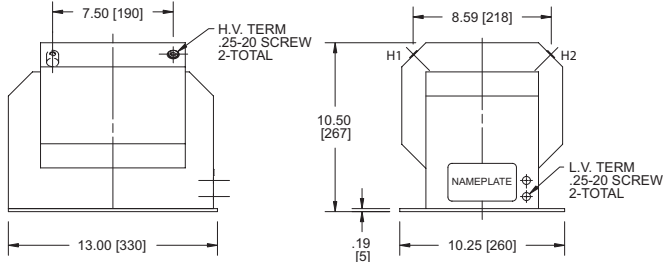
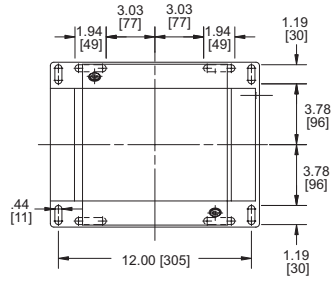
IEEE test reports are stored electronically and can be e-mailed in various formats at the time of shipment.

Standards

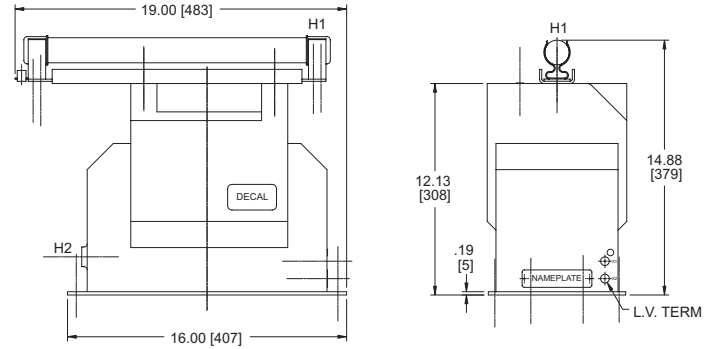
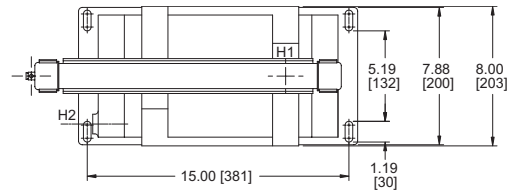
These units meet all applicable IEEE and NEMA standards.

Provided by Northeast Power Systems, Inc.
www.nepsi.com

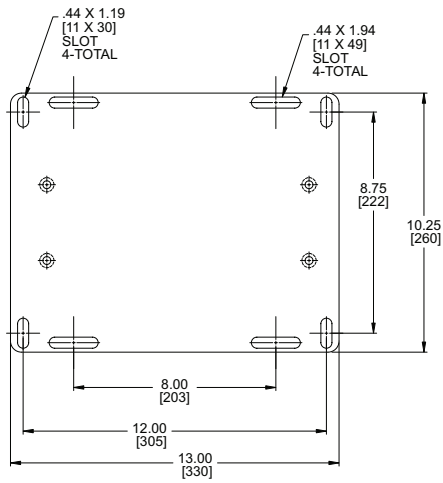
Unit dimensions



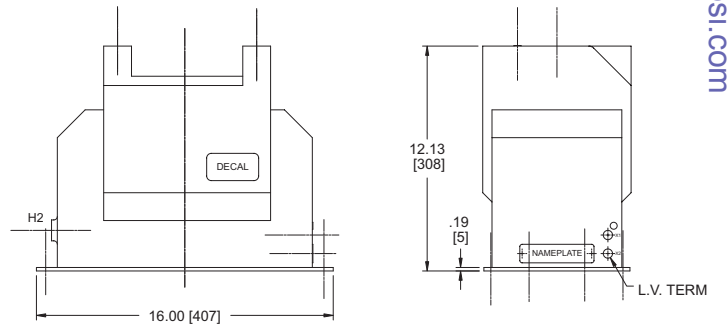
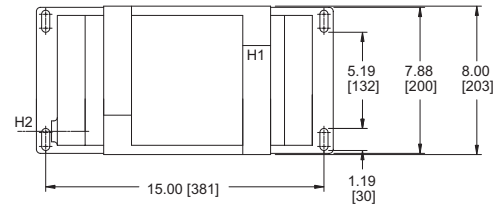
Type VIZ-12, unfused (approximate weight 110 lbs.)



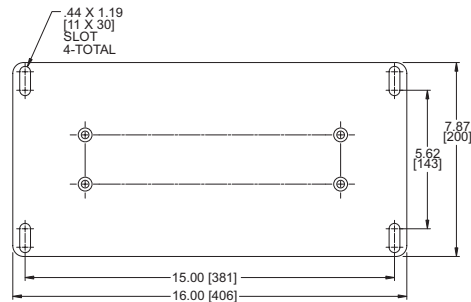
Type VIZ-12G, fused (approximate weight 105 lbs.)



Type VIZ-12 baseplate



Type VIZ-12G, unfused (approximate weight 102 lbs.)



Type VIZ-12G baseplate

Selection guide

Primary voltage	Secondary voltage	Winding ratio	IEEE metering accuracy	Rated voltage factor	Thermal rating		Style number
					30° C	55° C	
Type VIZ-12 (unfused)							
7200/12470Y	120	60:1	0.3Z	1.1	2000	1500	9628A33G11
12000/20800Y	120	100:1	0.3Z	1.1	2000	1500	9628A33G05
13200/22865Y	120	110:1	0.3Z	1.1	2000	1500	9628A33G07
14400/24940Y	240	60:1	0.3Z	1.1	2000	1500	9628A33G04
14400/24940Y	120	120:1	0.3Z	1.1	2000	1500	9628A33G06
16500/16500Y	120	137.5:1	0.3Z	1.1	2000	1500	9628A33G09
18000/18000Y	120	150:1	0.3Z	1.1	2000	1500	9628A33G01
21000/21000Y	120	175:1	0.3Z	1.1	2000	1500	9628A33G02
24000/24000Y	120	200:1	0.3Z	1.1	2000	1500	9628A33G03
Type VIZ-12G (unfused)							
12000/20780GY	120	100:1	0.3Z	1.25	1500	750	7881A72G01
14400/24940GY	120	120:1	0.3Y	1.25	1500	750	7881A72G05
14400/24940GY	120	120:1	0.3Z	1.25	1500	750	7881A72G02
16000/27600GY	120	133.33:1	0.3Z	1.25	1500	750	7881A72G03
18000/18000GY	120	150:1	0.3Z	1.1	1500	750	7881A72G04
Type VIZ-12G (fused)							
12000/20780GY	120	100:1	0.3Z	1.25	1500	750	7881A64G01
14400/24940GY	120	120:1	0.3Z	1.25	1500	750	7881A64G02
12000/20780GY	120	100:1	0.3Z	1.25	1500	750	923A116G01
13200/22900GY	120	110:1	0.3Z	1.1	1500	750	923A116G10
14400/14400GY	120	120:1	0.3Z	1.25	1500	750	923A116G11
14400/24940GY	120	120:1	0.3Z	1.25	1500	750	923A116G02
15000/15000GY	120	125:1	0.3Z	1.25	1500	750	923A116G05
16000/16000GY	120	133.33:1	0.3Z	1.25	1500	750	923A116G06
18000/18000GY	120	150:1	0.3Z	1.1	1500	750	923A116G04
20000/20000GY	120	166.66:1	0.3Z	1.25	1500	750	923A116G08
24000/24000GY	120	200:1	0.3Z	1.1	1500	750	923A116G12
Type VIZ-12G (double secondary, fused)							
14400/24940GY	120 & 120	120 & 120:1	0.3Y & 0.3Y	1.1	1500	750	923A132G01
16000/16000GY	120 & 120	133.33 & 133.33:1	0.3Z & 0.3Z	1.1	1500	750	923A132G02
18000/18000GY	120 & 69.28	150 & 259.8:1	0.3Y & 0.3Y	1.1	1500	750	923A132G04
18000/18000GY	120 & 120	150 & 150:1	0.3Z & 0.3Z	1.1	1500	750	923A132G05

Note: 50 Hz styles available

Additional styles available upon request. Contact your ABB sales representative or call +1-252-827-3212 for more information.

Optional accessories

Fuse kits to convert unfused VIZ-12 or VIZ-12G to fused style:

- VIZ-12 fuse kit: 9628A05G72
Contains two CLE-PT fuses -
0.5, 25.5 kV (style # 50C5225G04) and hardware)
- VIZ-12G fuse kit: 9628A05G68
Contains one CLE-PT fuse -
0.5, 25.5 kV (style # 50C5225G04) and hardware

For more information please contact:

ABB Inc.

Medium Voltage Distribution Components

3022 NC 43 North

Pinetops, NC 27864

USA

Phone: +1 252 827 3212

Fax: +1 252 827 4286

www.abb.com/mediumvoltage

Note:

We reserve the right to make technical changes or modify the contents of this document without prior notice. With regard to purchase orders, the agreed particulars shall prevail. ABB does not accept any responsibility whatsoever for potential errors or possible lack of information in this document. We reserve all rights in this document and in the subject matter and illustrations contained therein. Any reproduction—in whole or in parts—is forbidden without ABB's prior written consent.

Copyright 2005 ABB.

All rights reserved.